

BAUWERK

Parkett

Press release

Authentic and modest

Architect Charlotte Nierlé combines modern influences and traditional warmth in the understated renovation of a 1960's house. High-quality oak parquet by Swiss manufacturer Bauwerk Parkett brings a warm tone into the building.



A house in Veyrier, Canton of Geneva, underwent a comprehensive and energetic renovation that focused on the respectful treatment of the building's existing size and the aim of preserving its authentic character. The architect, Charlotte Nierlé, chose the healthy-living 1-strip planks of the Villapark parquet by Bauwerk Parkett to create a cosy atmosphere in the living spaces.

In 1960, architect Edouard Nierlé bought the plot of land located in the small village of Veyrier at the foot of Mount Salève. Back then, the piece of land still accommodated an old forge built of natural stone. Given the cramped situation of the plot, Nierlé opted to rebuild the existing structure. He kept the original foundations and walls, and found an original solution for the many remaining stones from the facade. They were cast into the concrete facade as individual boulders, and still adorn the house today. These stones arranged in what appears to be a random pattern create a certain dynamic in the house's outer shell, representing a respectful fusion of historical construction with modern, minimalistic architecture.

Modern influences meet traditional construction methods

Bauwerk Group Schweiz AG

Neudorfstrasse 49, CH-9430 St Margrethen, Phone +41 71 747 74 74, info@bauwerk.com bauwerk-parkett.com

[Facebook](#), [Instagram](#), [LinkedIn](#), [YouTube](#), [Pinterest](#)

BAUWERK

Parkett

Edouard Nierlé also took traditional elements of rural architecture and reinterpreted them: the heavily tilted and offset pent roof with terracotta-coloured tiles merges naturally into the village's landscape. The absence of a roof overhang and the smooth roofing tiles add to the house's linear and modern character. Indoors, the architect realised surprising and original room concepts, expressing the avant-garde influences of his time. This work resulted in room sequences divided into different levels, which appear modern and contemporary even today.

Respect for the original structure

Around half a century later, Edouard Nierlé's granddaughter Charlotte took over the house and carried out its extensive and bold renovation. The architect insulated the roof, installed double-glazed windows and a glass facade, always aiming to preserve the house's original look and to make use of the building's existing dimensions

On the inside, Charlotte Nierlé replaced the linoleum flooring with waxed screed, which blends harmoniously with the white plastering of the walls and the exposed concrete. The latter is a stand-out feature in wall surfaces, room dividers, cupboards, and stairs, and underscores the minimalistic nature of the interior in features like the sofa and armchair pedestals. Nierlé arranged the reproduction of the doors and cabinets according to her grandfather's original designs.

Bright oak parquet takes living spaces to a new level

A parquet floor was used to visually separate the lower-lying living area and the adjoining bedrooms from the rest of the ground floor. Here, the architect deliberately chose the healthy-living Villapark 1-strip-plank parquet by the Swiss manufacturer Bauwerk Parkett. These large, 2,100x190 mm planks have bevels on their long sides, which further emphasises their dimensions. Villapark uses HDF technology with a resource-saving, high-quality oak top layer that is 2.5 mm thick. Charlotte Nierlé explained the reason for choosing Villapark: "The decisive factor for me was the large selection of healthy-living and high-quality natural wood. The distinctive brushing not only looks chic, but also feels great to walk on barefoot." The light-coloured oak offers a fitting frame for the furniture Edouard Nierlé designed for this house himself.

Like her grandfather, Charlotte Nierlé used the situation and the history of the location as a source of inspiration to create something new, while preserving and improving on interesting and distinctive elements. The result impresses with a discreet set of high-quality materials combined in a skilful and sometimes surprising manner. The oak wood in the floor enters the building as a new element and a deliberate contrast to the 1960's architecture, elevating the aesthetic of the overall structure with a warm and comfortable charm.

BAUWERK

Parkett

Details and facts

Project: Renovation of a 1960's house

Location: Veyrier (community in the Canton of Geneva, Switzerland)

Renovation architecture and interior design by: Charlotte Nierlé, Acacias (CH),
www.charlottenierle.com

Parquet: Villapark Oak Avorio by Bauwerk Parkett, in a calm grading

Floor installer: MS Services SA

Photos: Sven Högger

For press enquiries, please contact

Rainer Häupl

bering*kopal GbR, communications agency

Tel. + 49 (0) 711 74 51 75916

rainer.haeupl@bering-kopal.de

www.bering-kopal.de

St Margrethen (CH), March 2024

Reprint free of charge/specify source

BAUWERK

Parkett

1 Timeless and discreet, the renovated 1960's building blends into the surrounding nature at Mount Salève in Switzerland. Photo: Sven Högger

2 The furniture in the living area is partially based on Edouard Nierlé's original designs, put on display against the warm-coloured 1-strip-planks by Bauwerk Parkett, which also offer a contrast to the concrete surfaces. Photo: Sven Högger

3 Exposed concrete is one of the interior's distinctive elements, used in walls, room dividers and furniture. The steps of the stairs leading to the lower living area level were made out of parquet by Bauwerk. Swiss-made stair solutions have a decisive advantage: the parquet floor and the stairs can have the same colour and the surface treatment, as well as the same level of gloss, for seamless transitions. Photo: Sven Högger

4 Stairs and ramps divide the ground floor into two levels, creating an unusual room structure. The transition from the cool and smooth concrete floor to the warm and structured planks of Villapark parquet used in the lower-level living and bedroom area produces a clear contrast. Photo: Sven Högger

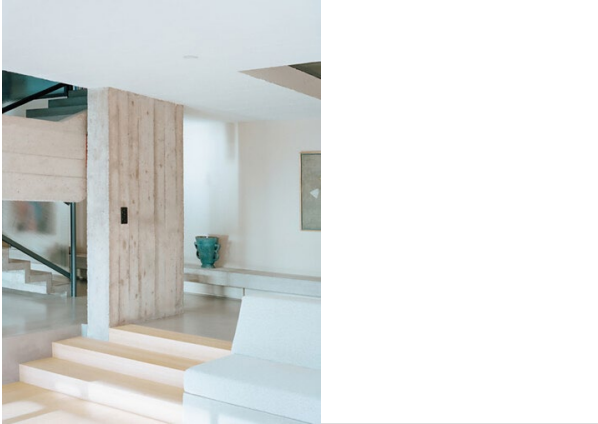
1.



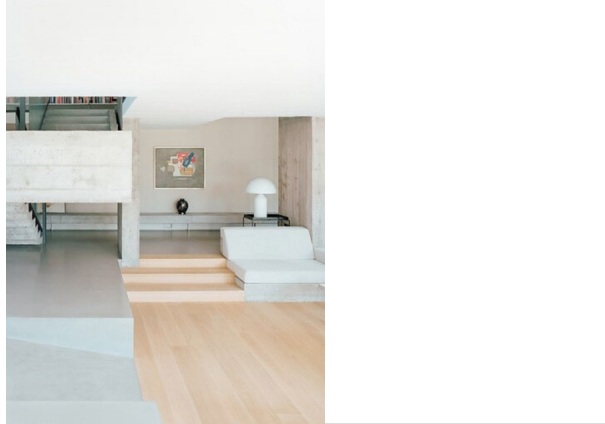
2.



3.



4.



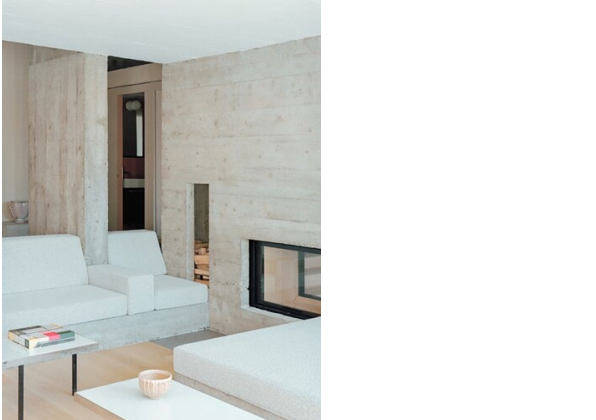
BAUWERK

Parkett

5 Villapark is made at Bauwerk Parkett's main facility in St Margrethen. All Villapark products have been tested by independent institutions and are 100% healthy-living. Photo: Sven Högger

6 In the bedroom, 1-strip-planks by Bauwerk Parkett create a cosy mood and add a warm component to the grey and white colour scheme. Photo: Sven Högger

5.



6.



BAUWERK

Parkett

Bauwerk Parkett — Built for a lifetime

What began in 1935 with the invention of solid parquet by Swiss pioneer Ernst Göhner sets new standards for ambitious design and healthy living today. Just like every tree and every piece of wood, each of our responsibly manufactured planks is sustainable and unique. A fusion of Swiss engineering and authentic nature results in extraordinary living experiences: today, and for future generations.

bauwerk-parkett.com